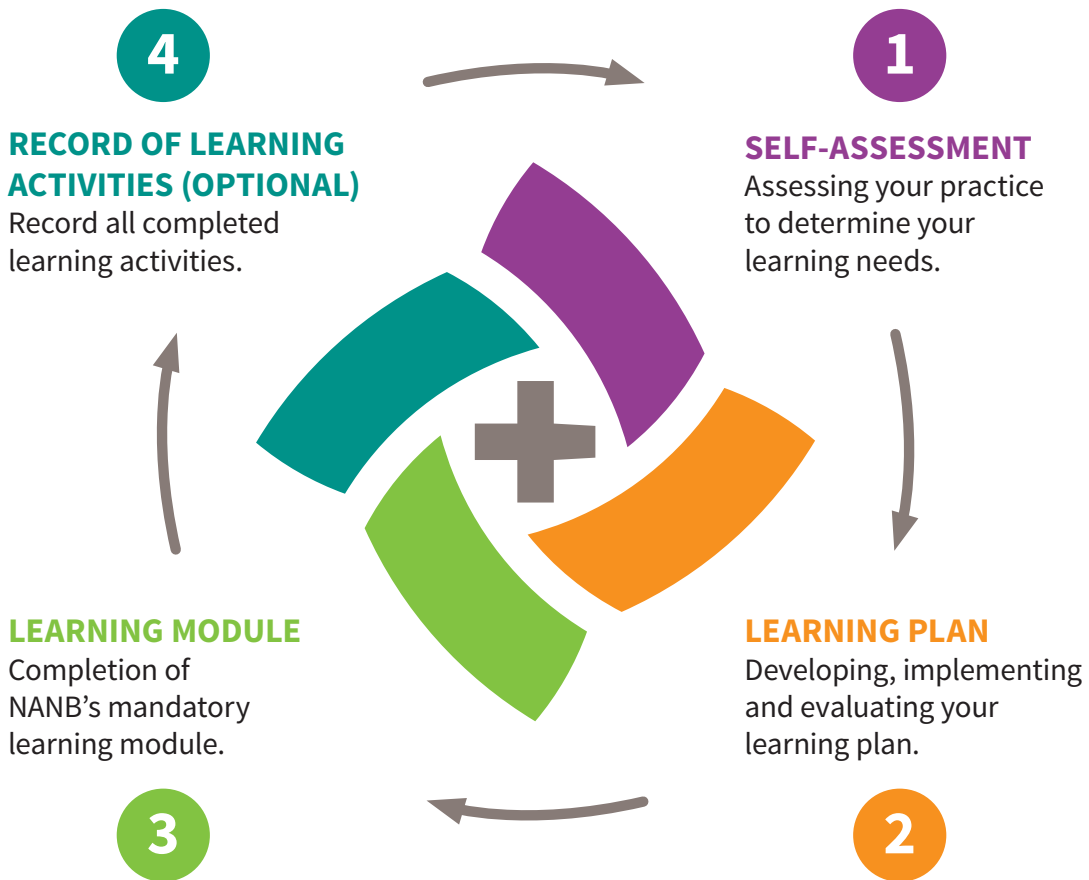


Continuing Competence Program

THE FOUR STEPS TO MEETING THE CCP REQUIREMENTS:



The CCP is an ongoing process that extends throughout the year. This includes periodic assessment of your practice to ensure that you are meeting your identified learning goals. Outlined below is a suggested timeline to help you with planning your annual CCP activities.

DECEMBER	JUNE
<ul style="list-style-type: none"> • Complete your self-assessment and choose indicators that you would like to focus on in the coming year. • You must choose at least one indicator. 	<ul style="list-style-type: none"> • Revisit and update your learning plan. • Record any completed learning activities. • Remember that your learning goals can change throughout the year.
DECEMBER/JANUARY	OCTOBER
<ul style="list-style-type: none"> • Prepare a learning plan for the coming year. 	<ul style="list-style-type: none"> • Record all completed learning activities. • Evaluate the impact of the learning plan on your practice.
JANUARY	OCTOBER/NOVEMBER
<ul style="list-style-type: none"> • Begin implementing your learning plan by starting those activities that will allow you to meet your learning goals. 	<ul style="list-style-type: none"> • Renew your registration for the coming year. • Begin planning for your continuing competence by preparing to complete a new self-assessment and learning plan.
MARCH	
<ul style="list-style-type: none"> • Revisit and update your learning plan. • Record any completed learning activities. 	